



Poljčane Municipality

A guide to the trails of the natural and cultural heritage



PROGRAM
RAZVOJA
PODEŽELJA



Evropski kmetijski sklad za razvoj podeželja: Evropa investira v podeželje



TIC-razvojni center narave

INFORMATION

MUNICIPALITY OF POLJČANE TIC-RAZVOJNI CENTER NARAVE

Bistriška cesta 68, SI-2319 Poljčane

T +386 (0)2 8029 220, +386 (0)2 8029 291

E obcina@poljcane.si

www.turizem-poljcane.si

www.poljcane.si



Poljčane with Mount Boč
in the background

Poljčane Municipality

Travelers who arrive in Poljčane inquisitively look up towards the top of Boč, which rises steeply above the Dravinja valley.

It is the Boč and the Dravinja river valley that give life to the Poljčane Municipality. This local community, separated in 2006 from the once joint Slovenska Bistrica Municipality, is also closely linked at symbolic level with the two landscape elements and they even decided to put Boč and the Dravinja river in its coat of arms. The coat of arms also contains the typical Easter flower, a sensitive steppe plant that thrives on the Boč and made Boč widely recognizable.

The municipality consists of two geographically related areas within the local communities of Poljčane and Studenice, which combine 18 settlements. Poljčane, as the administrative and cultural core of the municipality, is an important traffic junction between Rogaška Slatina, Celje, Maribor and Ptuj. The rich natural and cultural heritage thus invites many travellers to stop and learn more about the precious pearls of the past that are entrusted to us in conservation.



Dravinja river

The Dravinja gives its name to the valley through which it flows

The Dravinja river is one of those Slovene rivers, which has a preserved natural riverbed and riparian vegetation on a considerable section.



Lucanus cervus

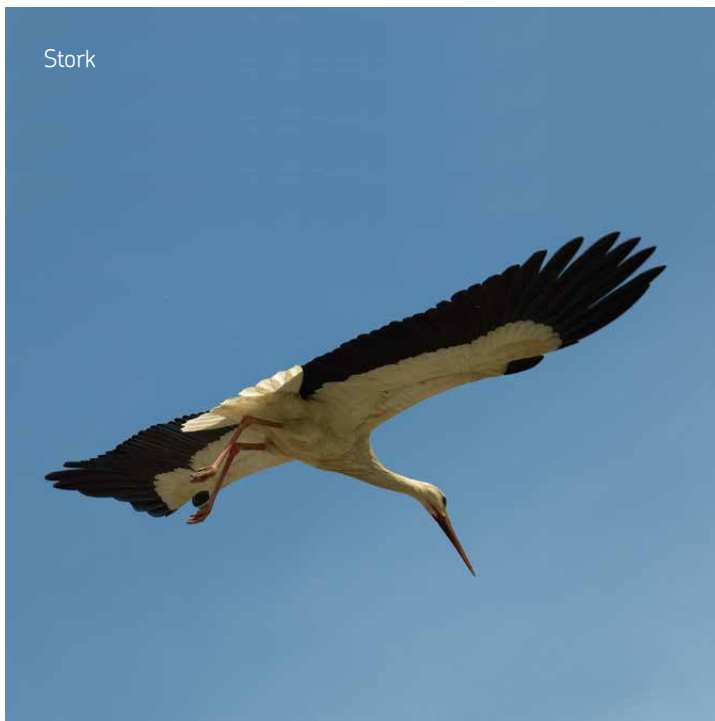


Yellow iris

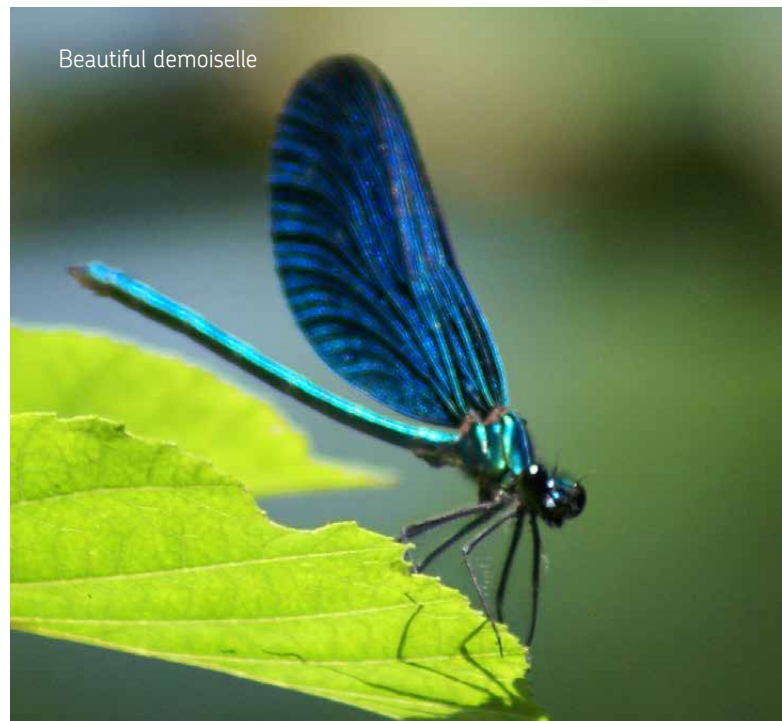


Common kingfisher

Stork



Beautiful demoiselle



This, covered with mighty and old trees that lean over the water, offers a living space to one of the most beautiful and endangered bird species in Slovenia – the kingfisher. Flood terrains of the Dravinja meadows, where borders, lonely trees, reeds and dead river branches are preserved, offer a home to the striking white stork, which boasts one of the strongest populations in Slovenia in the Dravinja valley. The butterflies Dusky large blue (*Phengaris nausithou*), the Alcon blue (*Phengaris alcon*) and the Large copper (*Lycaena dispar*) still fly over the meadows by the river. Sensitive dragonflies, such as the Green snaketail (*Ophiogomphus cecilia*), inhabit the Dravinja river. Here, on summer nights, we can also meet the stag beetle (*Lucanus cervus*), which is becoming increasingly rare because of the disappearance of old and mighty trees.

Numerous small pearls of nature hidden by the magnificent Dravinja river and spacious wet meadows connected with it are now even closer to the eye. On the Experience Ground and the Bird Watching Observatory, intended for visitors, interested visitors and nature lovers will become acquainted with the exceptional natural heritage of the Dravinja valley, which ranks among the most environmentally valuable areas in Europe.



Beech forest



Boč-Mount Saint Donatus Nature Park



Čreti Hayrack



Dusky large blue



European green woodpecker



Great green bush-cricket

Boč Landscape park

Among travellers who have ever visited Poljčane or the surrounding places, there is certainly no one who would have missed the mighty and green mountain chain of Boč, which rises above the plain along the Dravinja river.

Due to the exceptional and preserved natural and cultural heritage and typical landscape, the area of Boč, together with Donačka Gora, was declared the Boč - Donačka Gora Landscape Park by Decree in 1992. The complex natural area comprises large forests dominated by beech, steep rocky walls and karst regions, dry and humid meadows, preserved springs and streams and areas with anthropogenic influences, which are reflected in the typical cultural landscape and architecture.

Nature conservation allows for the colourful world of wild orchids that grow on dry grasslands on carbonate soils. The number of these is among the highest in Europe. Dry meadows at Bočka ravan (the Boč plains), where farmers have been using the pastures for centuries, and today extensive meadow care is carried out in the area with mowing, represent the living space of a rare and endangered plant species, the Easter flower. This sensitive steppe plant thrives in an isolated area on which it resists numerous pressures from the environment. Fine and rich is also the animal world. Many species of bugs, bats and other mammals, birds, reptiles and amphibians have found their home here!



Belojača Cave

Karst world and mines

Today's image of the territory
of the Poljčane municipality has
been growing and evolving over
hundreds of millions of years.



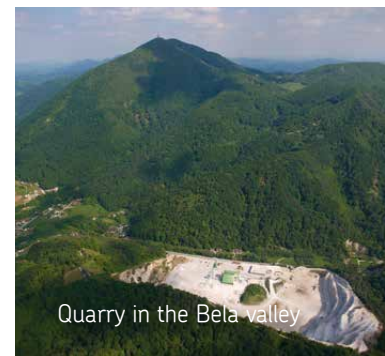
Karstic springs in Studenice



Bats



Via ferrata to Boč



Quarry in the Bela valley



Šega minea

According to the age of the oldest rocks in Slovenia, which are about 600 million years old, from a geological point of view, the rocks in the area of the Poljčane municipality, are quite 'young'. Here we can find sediments and sedimentary rocks. Among the sediments we can find mostly gravel and sands of the Dravinja valley, and among sedimentary rocks the Boč dolomites as well as marl, clay and sandstone at the northern edge of Boč.

BELOJAČA

The 550-m long, original karst cave with an interesting cave system is one of the most important resorts and shelters of bats in Slovenia and also in the wider European area, since it represents an important refuge and wintering place for endangered species of bats, the greater horseshoe bat and the lesser horseshoe bat and the common bent-wing bat. So we do not enter the cave; we admire it in front of the entrance, thus contributing to the maintenance of this fragile and endangered animal species.

ŠEGA MINE

At the touch of some 20-million-year-old Miocene rock with nearly 250-million-year-old Perm, coal deposits have been created. This coal, almost 30 million years old, was dug in the past in Stanovsko, Ljubično, Podboč, Studenice, Kleče and Šega. The Šega coal mine has the longest history. The 'black gold' was dug there as early as in Napoleon's time.

NATURAL AND CULTURAL HERITAGE MAP

NATURAL HERITAGE AND RELATED FACILITIES

- 1 Čreti Hayrack
- 2 Nature Development Centre
- 3 Petrina's lime tree in Zgornje Poljčane
- 4 Bird watching station
- 5 Two Spanish cedars and two lime trees in the courtyard of the monastery in Studenice
- 6 Karstic water springs in Studenice
- 7 The two Švagan's common junipers and the Kovač's yew at Križeča Vas
- 8 Dole Learning Polygon for Self-Sufficiency
- 9 Hrastje Learning Facility
- 10 Beech forests in Hrastovec
- 11 Šega mine
- 12 Belojača Cave
- 13 Greater Easter flower site on the Mount Boč

CULTURAL HERITAGE AND RELATED FACILITIES

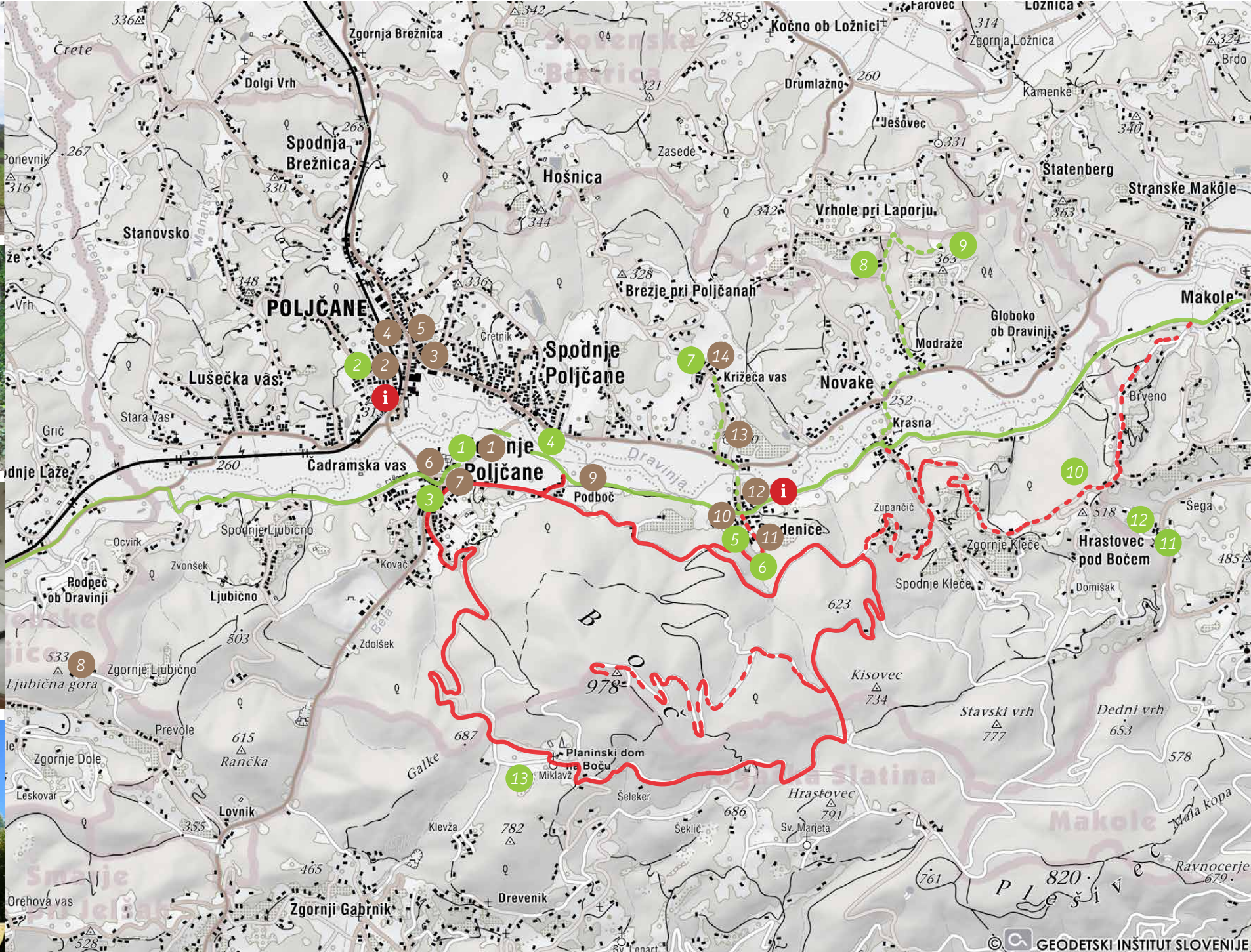
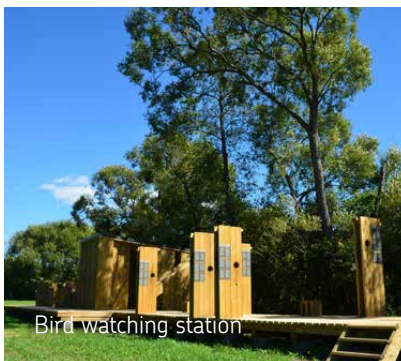
- 1 Čreti Hayrack
- 2 Nature Development Centre
- 3 Zimet House
- 4 Railway Station and Interlocking Tower
- 5 Poljčane Municipality
- 6 Zgornje Poljčane Village Centre
- 7 Church of St. Cross in Zgornje Poljčane
- 8 Mother of God Church at Mount Ljubično
- 9 Hayrack - Relaxation Oasis
- 10 Studenice Village Centre
- 11 Monastery with the Church of Three Kings in Studenice
- 12 Exhibition area of the Samostan Studenice Tourist Society (museum collections)
- 13 Church of St. Lucia in Studenice
- 14 Križeča Vas Ethnologic Village (wind mill, farmhouse parlour, press, barn)

FORMILSKA CYCLING ROUTE
(difficult cycling route) length: 9.7km

DRAVINJA CYCLING ROUTE
(easy cycling route) length: 9km

RENT-A-BIKE INFO:

TD SAMOSTAN STUDENICE
Studenice 3, SI-2319 Poljčane, +386 (0)40 432 810
MUNICIPALITY OF POLJČANE, TIC-RAZVOJNI CENTER
NARAVE, Bistriška cesta 68, SI-2319 Poljčane
+386 (0)2 8029 220, +386 (0)2 8029 291



MAP OF LEARNING, HIKING AND MOUNTAIN TRAILS

EATING ESTABLISHMENTS

- 1 Gostišče Jug Restaurant
- 2 Plac pod Bočem Restaurant
- 3 Gostilna Kajtna Restaurant
- 4 Domačija Debelak Tourist Farm
- 5 Gostilna Kidrič pri Dvojčicah Restaurant
- 6 Boč Mountain Hut

MOUNTAIN AND HIKING TRAILS

- Studenice-Mount Boč Mountain Path (forest road)
/ easy marked route, duration time: 2h /
- Zg. Poljčane-Boč Mountain Path (across the Baba plateau)
/ easy marked route, duration time: 1h45min /
- Zg. Poljčane-Boč Mountain Path
(past the Balunjača Cave or along the via ferrata)
/ easy marked route, duration time: 1h35min /
- Path Along the Dravinja River
/easy trail, length: 9km/

LEARNING TRAILS:

- Monastery Learning Trail
/ easy forest trail, length: 1km /
- Forest learning trail
/ easy marked route, duration time: 3h30min /

P Parking WC Outhouse



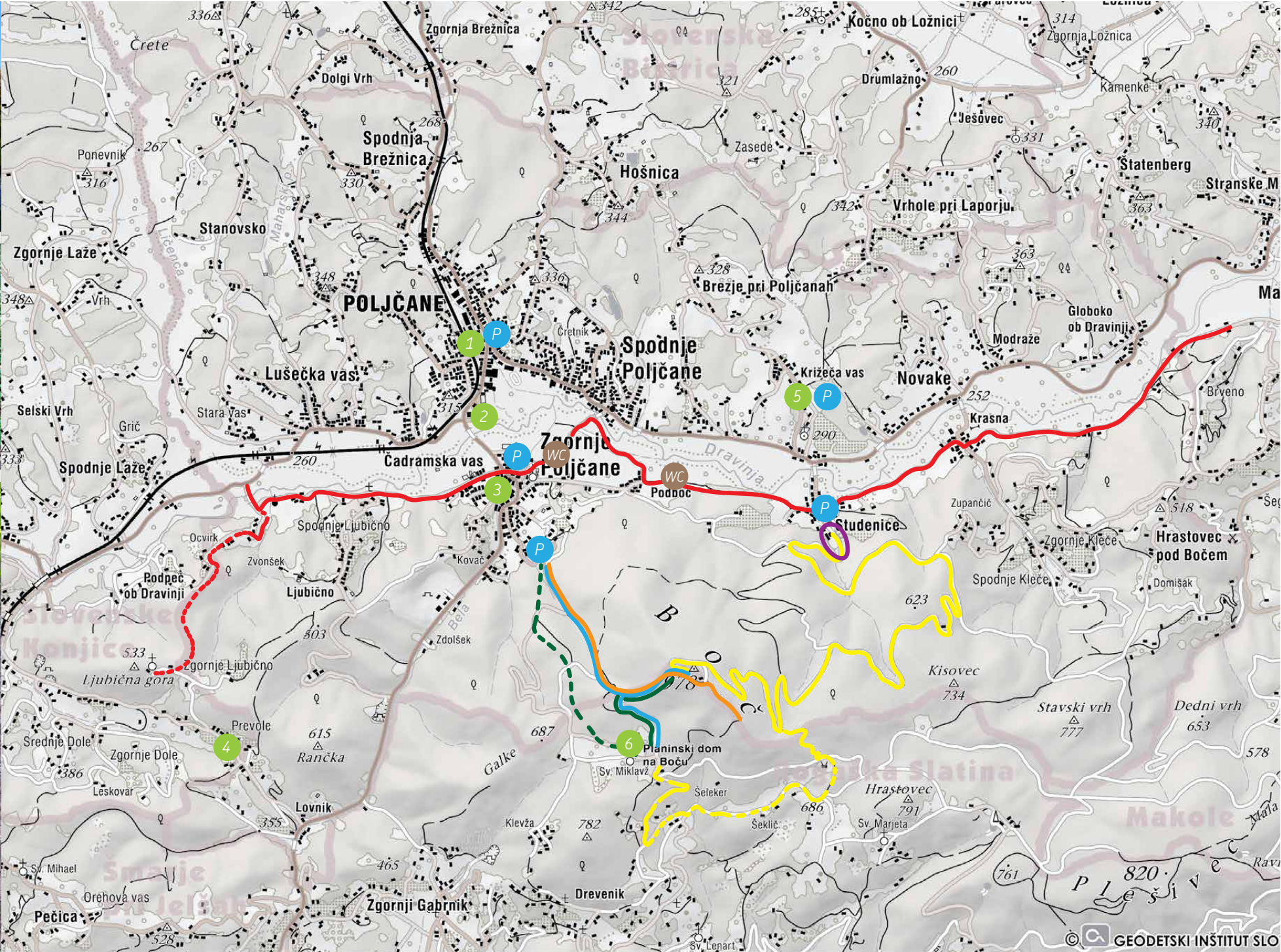
Mt. Boč



Mountain Path



View from Mt. Boč



Studenice

Caught between the mighty Boč mountain range and the mysterious Dravinja river, Studenice is by far best known for the tranquillity that the visitor feels at almost every step.



Studenice Castle



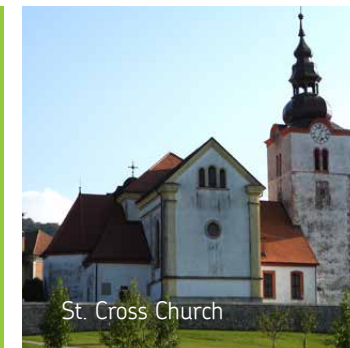
Former school in Studenice



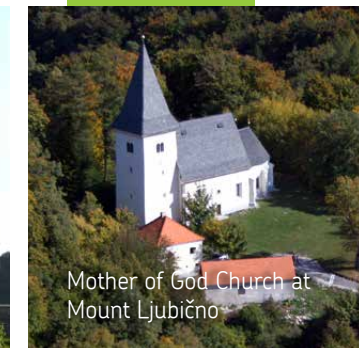
Studenice Settlement

Zgornje Poljčane and Poljčane

Leaning on the mighty Boč, the Zgornje Poljčane boasts sacred and profane cultural heritage.



St. Cross Church



Mother of God Church at Mount Ljubično



Centre of Poljčane

The visitor is attracted by the peace that emanates from the Studenice market, but above all the remnants of the once magnificent monastery and the preserved nature that is booming in the surrounding area and is reaching a peak in the appearance of three karst springs below the Boč.

Its heyday, that is still reflected today, began in Studenice around the year 1230, when Zofija Rogaška, in the town near the well of mercy, set up a travel station with a church known as 'the hospital'. After 1237, this powerful and influential noblewoman established the female St Mary's Monastery on the site, which she led. Before the middle of the 15th century, the walls and several buildings were added to the monastery. In the second half of the 17th century and in the first half of the 18th century, the monastery, with the church of the Three Kings, was renovated in the Baroque style. Due to the paintings in the market, the statues, the remains of the castle and the church of St. Lucy (sv. Lucija), Studenice counts as an important place in the cultural heritage of the wider area.

Among the most important heritage sites is the Church of St. Cross (cerkev sv. Križa) in Zgornje Poljčane. It was built in the second half of the 12th century. In the 14th and 15th centuries, it was dedicated to the Virgin Mary as a subsidiary of the church in Laporje. The western part of the aisle is preserved from the Romanesque church. Among the most interesting finds in the church is the marble slab, which served as a Roman votive altar dedicated to the god Mithra.

The most important objects of the cultural heritage of the Zgornje Poljčane are: the former Kolarič villa in Zgornje Poljčane, the Old school, the Franc's villa, the Senegačnik homestead, the Župnišče, the Prešeren hayrack near the Dravinja, the Vernik mill and the seat of the former district in the Zgornje Poljčane at Prvomajski trg.

Poljčane, which became the centre of the municipality only with the arrival of the railway, before which the pulse of life was dictated by Zgornje Poljčane, boasts architectural heritage, among which is the Zimet house, which dominates the centre of the Poljčane, the Railway station, the crossing station, the seat of today's Poljčane Municipality and the former Dravinja Hotel. Near the railway station there was the once mighty wild horse chestnut tree, which dated back to the arrival of the railway in Poljčane, as an important monument of nature. It has now been replaced by a new sapling. This will bring new life and new vitality.



Windmill



Farmhouse parlour



Wine press

Križeca vas Ethnologic Village

is an agglomerated settlement,
extended on the hill, on the
left side of the Dravinja valley,
about half a mile from the town
Studenice and not far from the
Church of St. Lucy.

Due to the paintings in the market, the statues, the remains of the castle and the church of St. Lucy (sv. Lucija), Studenice counts as an important place in the cultural heritage of the wider area. Visitors in Križeca vas are impressed by the windmill, the farmhouse with a baker's oven, a village press, more than 180 years old, a charcoal hut, where several times a year they demonstrate the burning of charcoal and the museum of equipment and tools needed for farm work. The preserved hayrack, in which this collection is located, represents the cultural heritage created by the use of meadow and arable land along the Dravinja river.

With the mowing of flood meadow terrains, and extensive uses in arable land, there was a need for commercial facilities for storing the mowing, crops and tools. There is also a beehive in the village, which is also a learning facility. They also have a local market for the sale of local produce and products. In the past, Križeca vas competed for the title of European Village, where it received a silver award at the 2006 Entente Florale Europe competition.

Where to eat and sleep



Domačija Debelak



Gostilna Kidrič



Gostišče Jug



Planinski dom na Boču



Gostilna Kajtna



Plac pod Bočem

DOMAČIJA DEBELAK



Lovnik 11, SI-2319 Poljčane

T +386 (0)2 829 04 60 **M** +386 (0)41 628 911

E domacija.debelak@gmail.com

W <https://maribor-pohorje.si/izletniska-kmetija-domacija-debelak.aspx>

GOSTILNA KAJTNA



Prvomajski trg 25, SI-2319 Poljčane

T +386 (0)2 802 50 50

W www.odpiralnicasi.com/spots/bojan-kajtna-poljane-prvomajski-trg-0e41057341#timetable

GOSTILNA KIDRIČ PRI DVOJČICAH



Križeca vas 14a, SI-2319 Poljčane

T +386 (0)2 802 81 85

M +386 (0)41 731 462, +386 (0)31 390 875

W www.gostilna-kidric.com

PLAC POD BOČEM



Bistriška cesta 99, SI-2319 Poljčane

M +386 (0)70 375 378

W https://www.facebook.com/pg/Plac-pod-Bo%C4%8Dem-320491175516552/about/?ref=page_interna

GOSTIŠČE JUG



Bistriška cesta 52, SI-2319 Poljčane

T +386 (0)2 829 02 86 **E** gostisce.jug@gmail.com

W www.gostiscejug.si

PLANINSKI DOM NA BOČU



Drevenik 7, SI-3241 Podplat

T +386 (0)3 582 46 17



Dole Learning Polygon



Hrastje Learning Facility

Dole Learning Polygon and Hrastje Learning Facility

DOLE LEARNING POLYGON FOR SELF-SUFFICIENCY

The Dole Learning Polygon presents new opportunities for a greater self-sufficiency. Water intakes, rainwater collectors and a pond are present for a greater biodiversity. There are high beds, piles, raised beds, round beds, biomass beds, carton beds, and ditch and terrace beds. There are gardens of black chokeberries, blueberries, prunes, fruit trees, walnuts, hazelnuts, strawberries, vegetables, and herbs. The buildings in the facility are: earth cabin, yurt, plant house, solar station, and outhouses. / www.ipvo.si

HRASTJE LEARNING FACILITY

The Hrastje Learning Facility is a facility, where you can take a moment from the fast-paced life, the city hustle-and-bustle, and relax in nature. The facility is a private place away from roads, houses, and technology. It offers everything from field trips, work placements, trainings, and is intended for all generations: from preschools, primary schools, to families and individuals. In nature and well-kept facilities, you can celebrate birthdays, organise picnics, walk through the woods and observe animals, take a swim in the natural pool, bake bread in the bread oven or simply just take a rest.

/ www.ucniobjekthrastje.com

INFORMACIJE:

MUNICIPALITY OF POLJČANE TIC – RAZVOJNI CENTER NARAVE

Bistriška cesta 68, SI-2319 Poljčane

T +386 (0)2 8029 220, +386 (0)2 2029 29

E obcina@poljcane.si

www.turizem-poljcane.si

www.poljcane.si

SAMOSTAN STUDENICE TOURIST SOCIETY

Studenice 3, SI-2319 Poljčane

T +386 (0)40 432 810

E samostan.studenice@gmail.com

maja.iza@gmail.com

<https://tdstudenice.weebly.com>

LUCIJA KRIŽEČA VAS TOURIST SOCIETY

Križeča vas 14a, SI-2319 Poljčane

T +386 (0)41 628 712

E janez.sabec@gmail.com

INFORMATION AND TOUR-GUIDING ACROSS THE POLJČANE MUNICIPALITY:

Maja BRAČKO, **T** +386 (0)40 432 810

Klavdija MAJER, **T** +386 (0)41 493 871

Jelka HRIBERNIK, **T** +386 (0)31 599 292

Pankracij HRUP, **T** +386 (0)31 458 366

Vlado SKERBIŠ, **T** +386 (0)31 365 787

Published by: Municipality of Poljčane

Text: Klavdija Majer, Andreja Senegačnik

Photos: arhiv Občine Poljčane,

Matjaž Bedjanič, Samo Brbre, Dušan Klenovšek,

Janko Kovačič, Matevž Lenarčič, Klavdija Majer,

Monika Podgorelec, Milan Sternad, Nejc Zorko

Design by: Medijski guruji

Maps: Geodetski inštitut Slovenije

Production: GEAart d.o.o., 2019

Imprint: 1.500 copies



Velikončnica

*Here, you will have the opportunity to experience
nature and cultural heritage in a special way.*